

Holiday Home Manager v1.56 Installation Guide

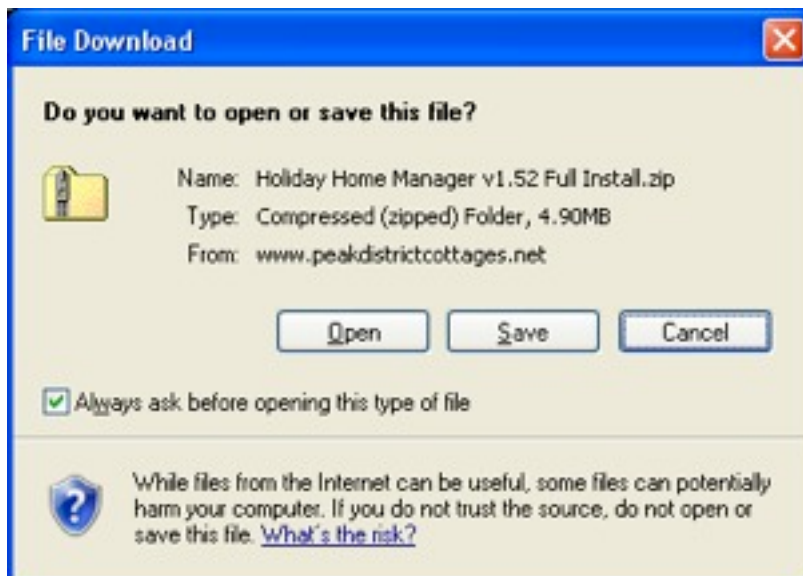
Start by click navigating to the Holiday Home Manager website at:

<http://www.peakdistrictcottages.net/software.html>

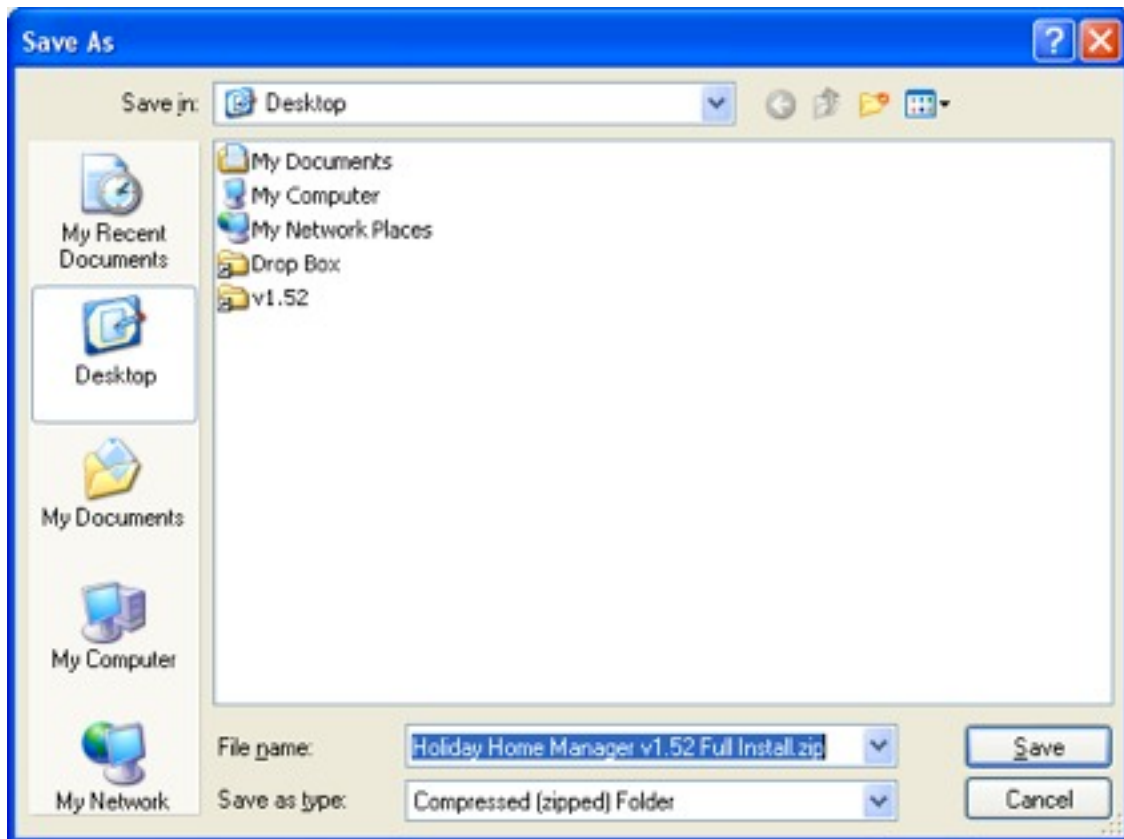


On the screen shot above, you can see the link in blue 'Holiday Home Manager v1.52 Full Install'.

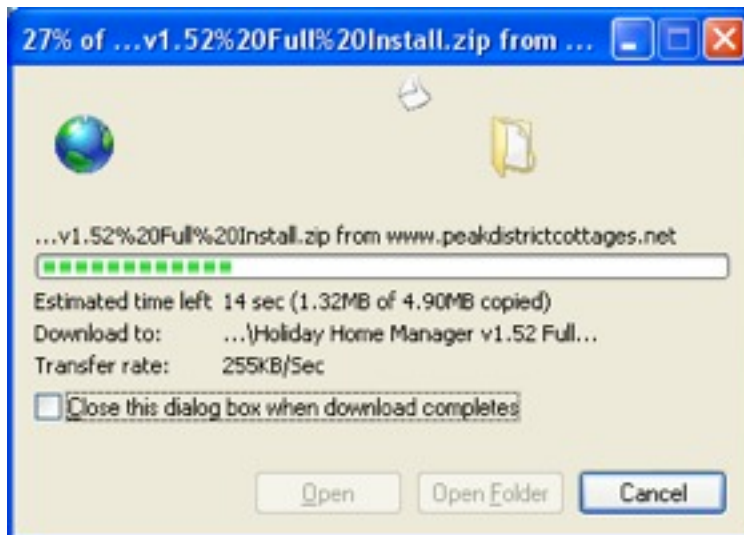
Click this link and the following panel will appear, when it does, click the 'Save' button.



Holiday Home Manager v1.56 Installation Guide

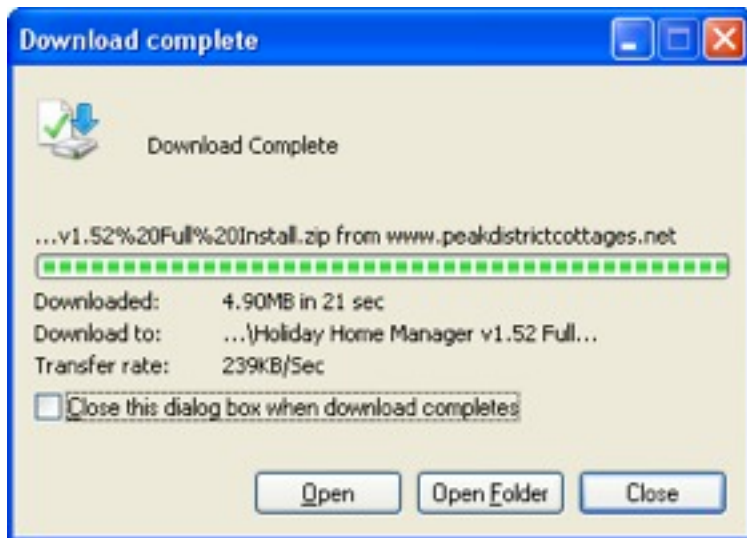


When the panel above appears, click the Desktop button on the left hand side just below 'My Recent Documents' and then click the 'Save' at bottom right.

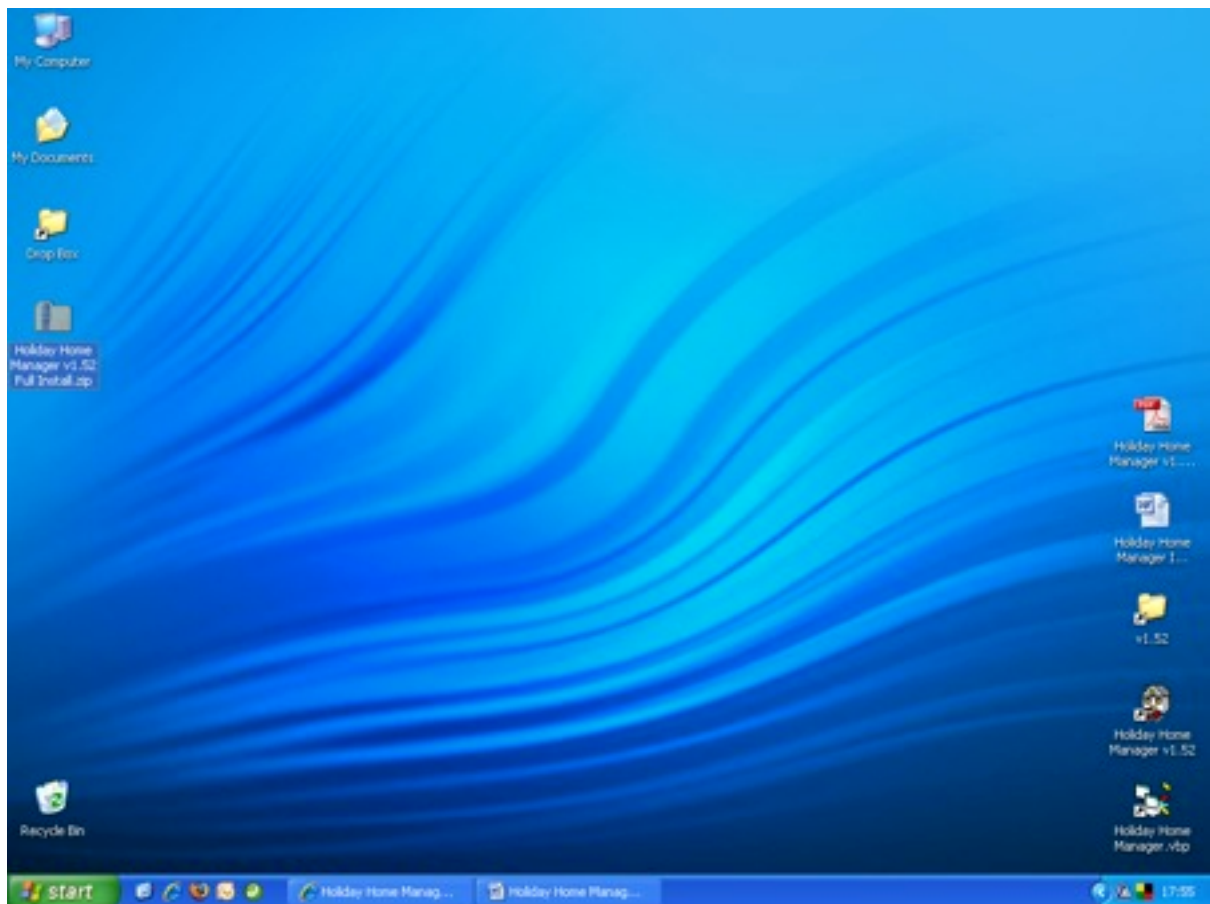


As the program downloads a panel like that above will be displayed with a green bar showing how the download is progressing. Once the download is complete, the following panel will appear:

Holiday Home Manager v1.56 Installation Guide



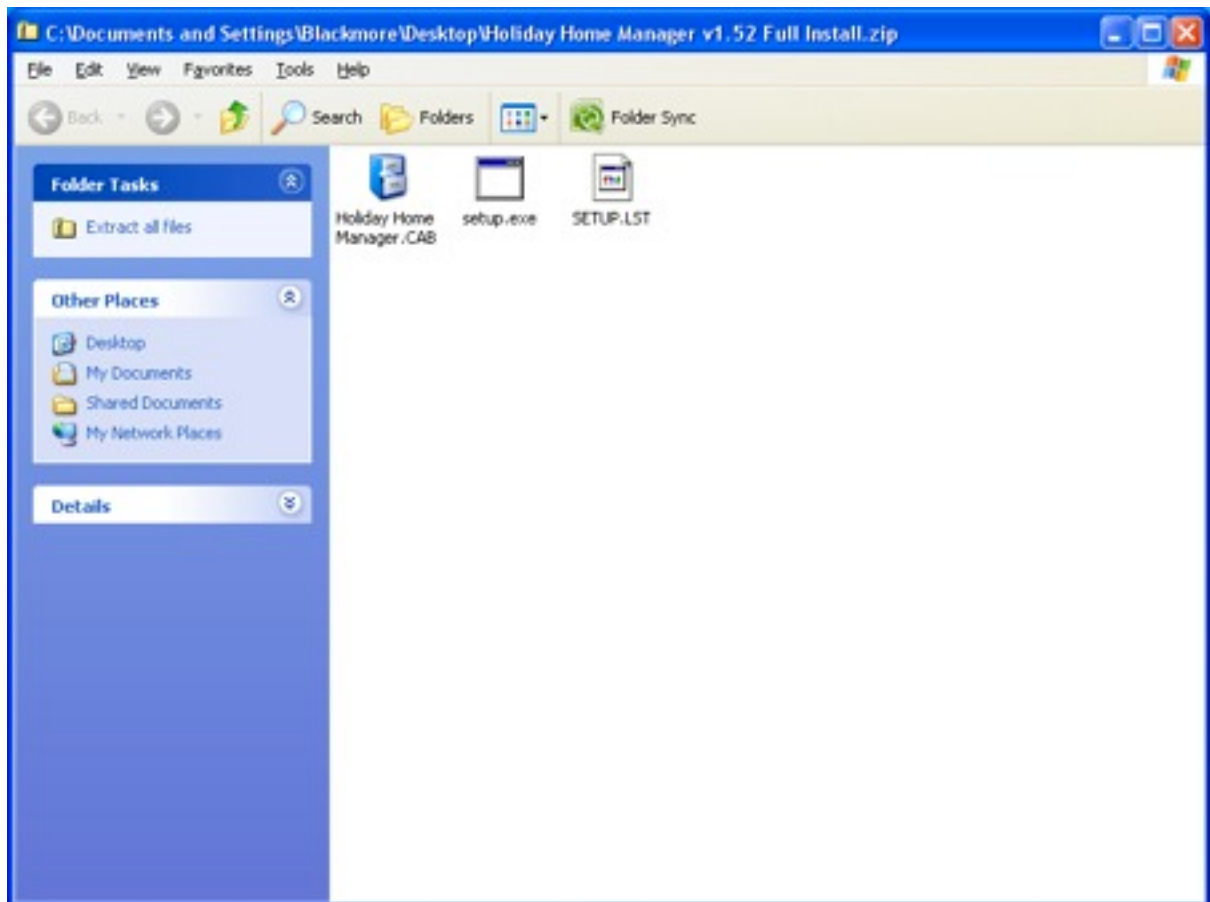
Click the 'Close' button at bottom right. If you then minimise your web browser you'll find the downloaded folder on your desktop:



If you are struggling to find it, it's the one with the zipper running from top to bottom indicating that it is a compressed folder.

Double-click it and it will open revealing three files inside:

Holiday Home Manager v1.56 Installation Guide



Holiday Home Manager v1.56 Installation Guide

Drag all three files onto your desktop and close the folder. Start the installation by double-clicking setup.exe on your desktop.

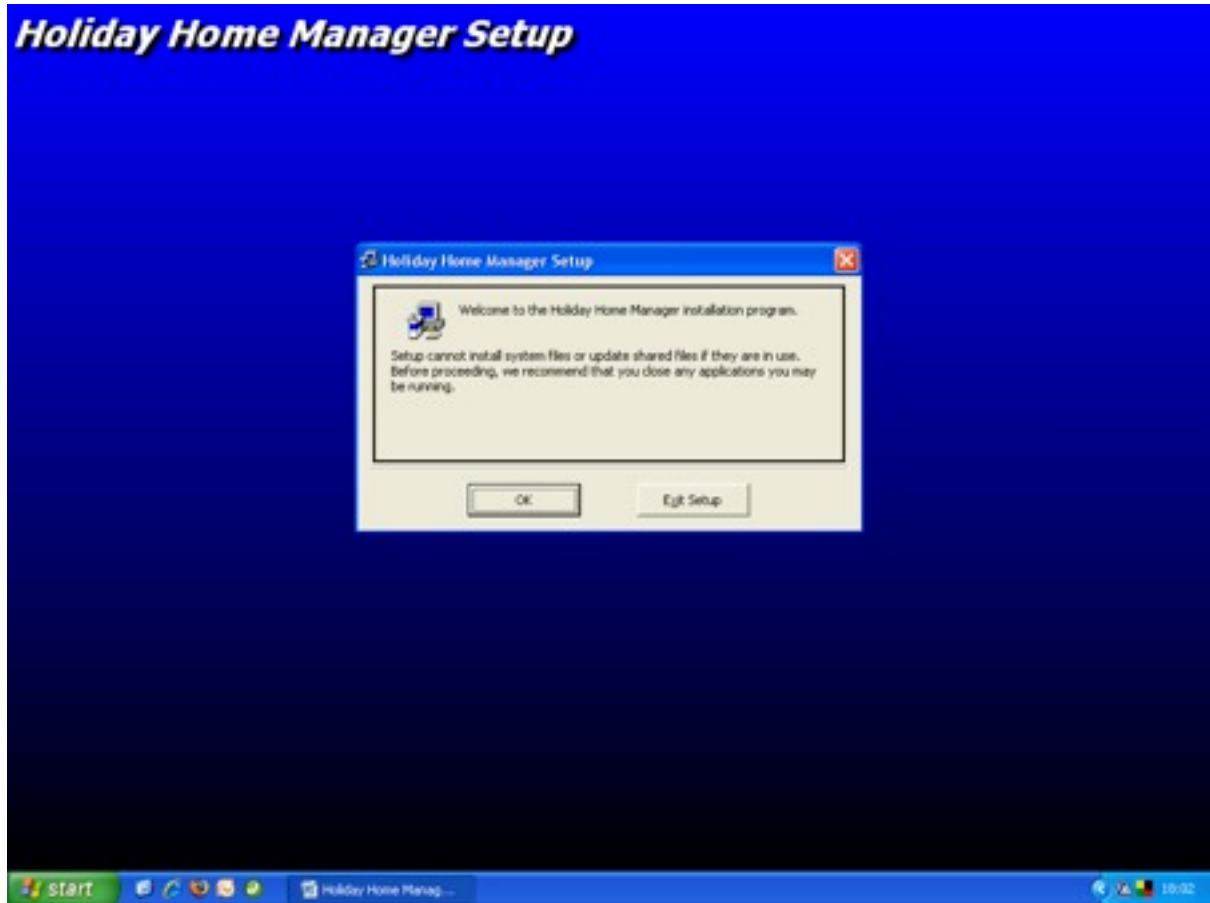


The following pane will appear for a moment:



Followed by:

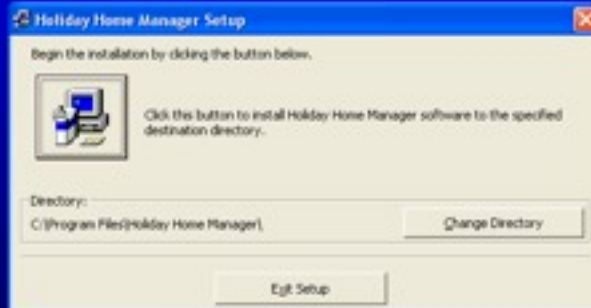
Holiday Home Manager v1.56 Installation Guide



Click the 'OK' button and the following screen will appear:

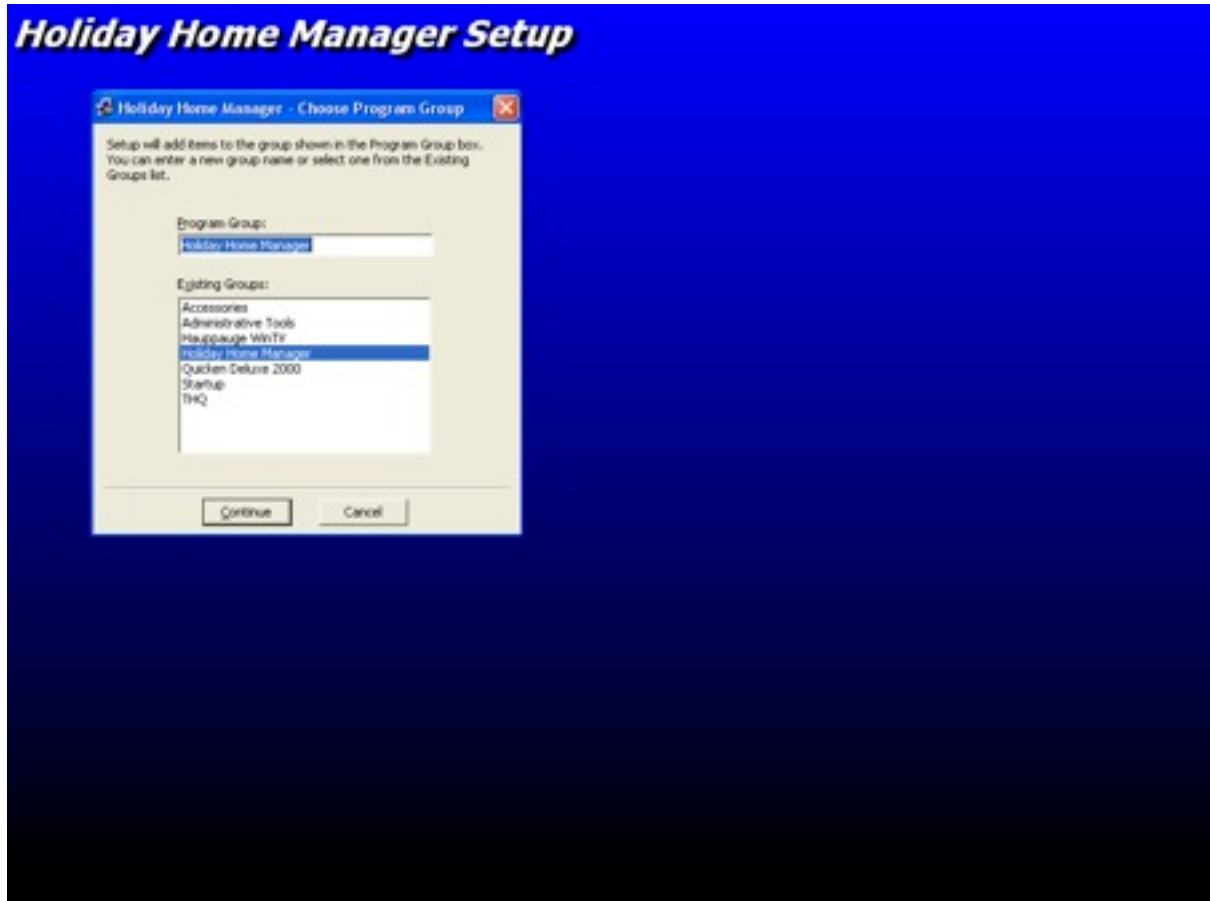
Holiday Home Manager v1.56 Installation Guide

Holiday Home Manager Setup



Click the large button showing a PC with a box in front of it and the following screen will appear:

Holiday Home Manager v1.56 Installation Guide



Click 'Continue' and the following screen will appear:

Holiday Home Manager v1.56 Installation Guide

Holiday Home Manager Setup



The above screen is showing the installation progress, once it reaches 100%, the following screen will appear:

Holiday Home Manager v1.56 Installation Guide

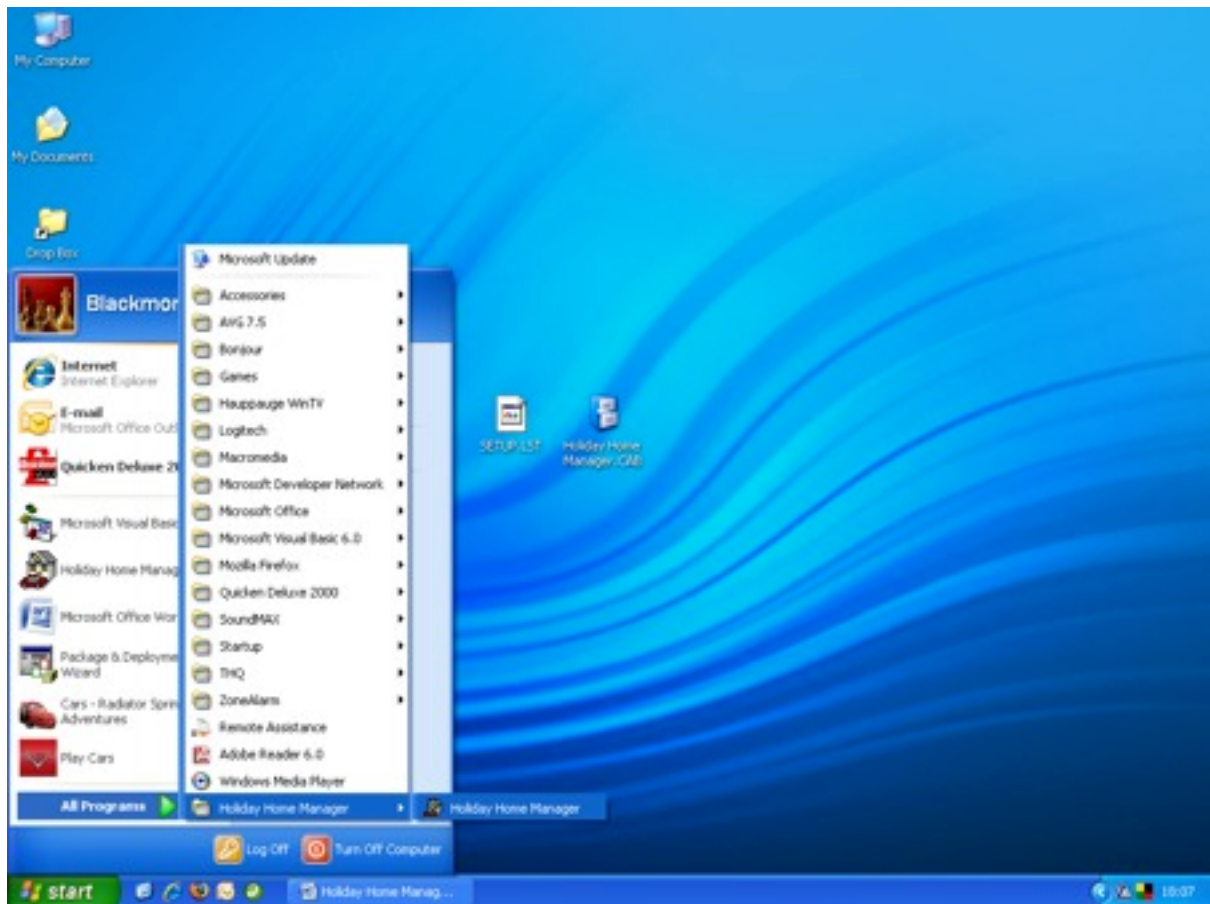
Holiday Home Manager Setup



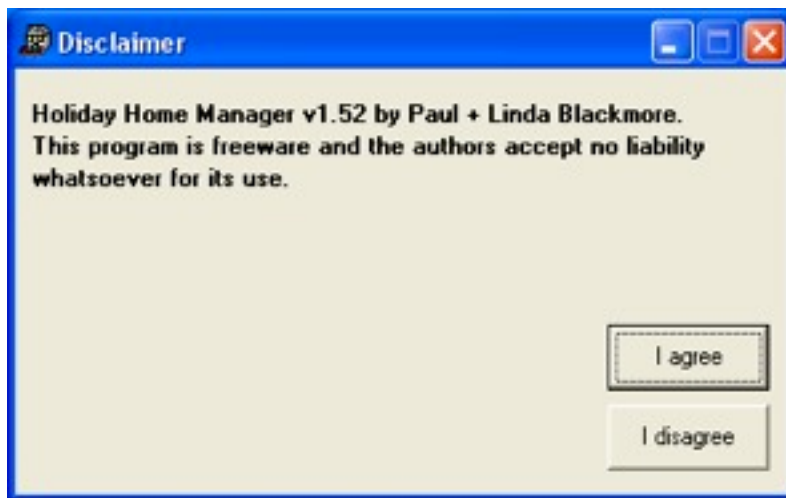
Click OK, and the installation is complete.

You'll now find Holiday Home Manager by selecting the <Start> button at bottom left, then select <All Programs>, then the 'Holiday Home Manager' folder, see the screen below:

Holiday Home Manager v1.56 Installation Guide

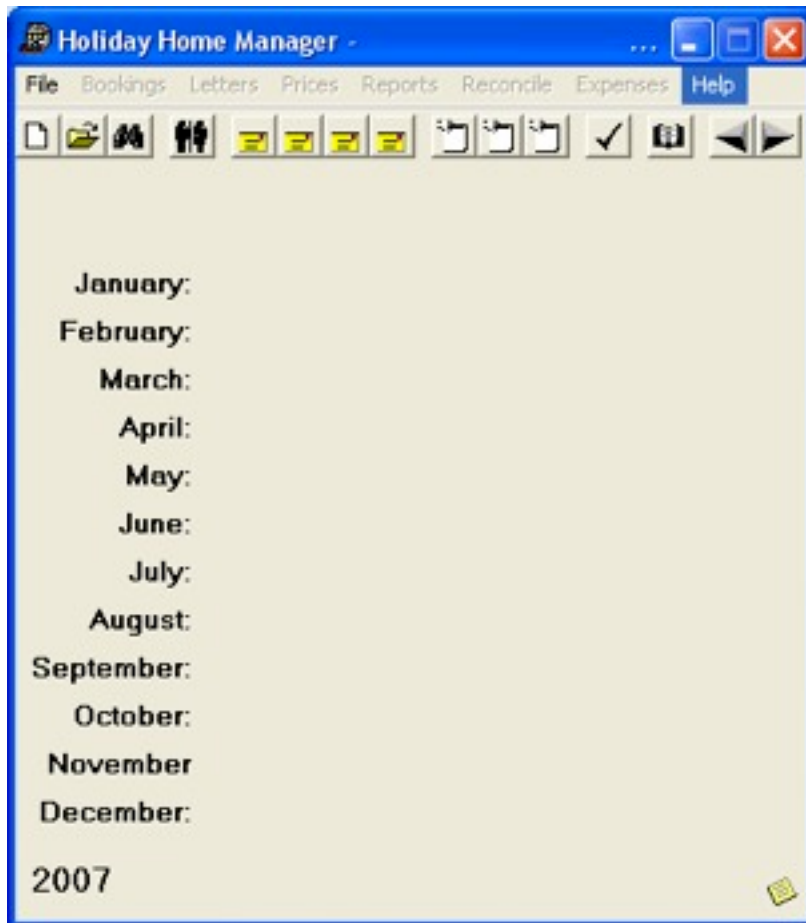


When you execute it for the first time, you've asked to accept the freeware disclaimer:



If you are happy to accept that it is freeware, click the 'I agree' button and the program will start:

Holiday Home Manager v1.56 Installation Guide



Click the help option on the menu bar at top right and select 'About Holiday Home Manager' and you'll see the following panel:



If you want to download the online manual (which is in .PDF format), click the words 'Click here' to the right of 'Online manual'. Once it has opened up, save it to the desktop.

Your installation is complete. Now open the online manual and it will guide you through how to use the program.

If you experience any problems with the above instructions, please feel free to contact us by email (the email address is shown on the help panel above) or call us on 0115 914 5808.